

# *Needs Assessment Gap Analysis*

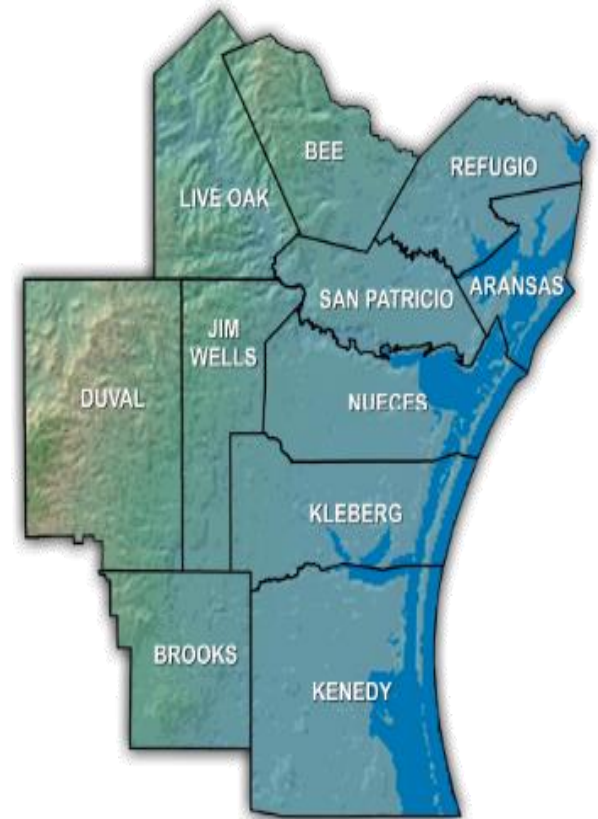


Regionally Coordinated  
Transportation Planning  
February 11, 2016

# Transportation Coordination Network of the Coastal Bend

As Lead Agency of the Coastal Bend Region, TCN has been tasked with updating the Regional Public Transportation Coordination Plan.

The Texas Department of Transportation through the Public Transportation Division supports lead agencies to develop an updated, five-year Regionally Coordinated Transportation Plan 2017-2021



# How is the Regional Public Transportation Coordination Plan used?

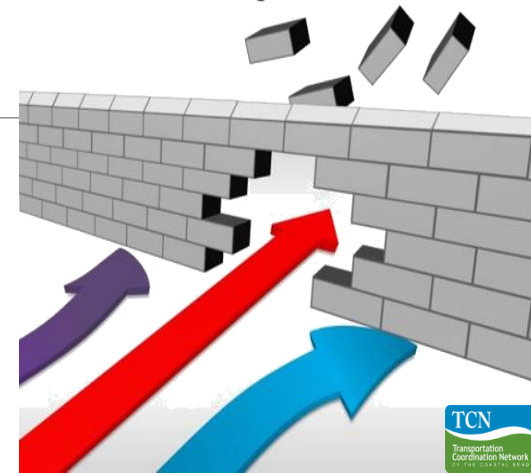
---

The Plan is used to set priorities in the region

To identify sponsors for project priorities

To request funding based on the needs and priorities identified

- All 5310 Funding must be related to the needs identified in this five year plan
- Specific Funding streams programs and projects will be related to the needs identified in this five year plan



# Past Approach

- Texas Transportation Institute (TTI) contracted to prepare transportation inventory

## Assistance Provided by

- Transportation Coordination Network of the Coastal Bend (TCN)
- Corpus Christi Metropolitan Planning Organization (MPO)

# Steps Taken

- 2010 Coastal Bend Public Transportation Needs Assessment Survey
- Focus Groups
- Regional Meetings to provide comments regarding transportation needs and opportunities
- 2011 Transportation Consumer Assessment Survey

# Essential Partners

- **Public Transportation Providers**

Corpus Christi Regional Transportation Authority, Rural Economic Assistance League, Bee Community Action Agency, Kleberg County Human Services, Community Action Council of South Texas, El Expreso Bus Company

- **Human Service Agencies**

Refugio County Elderly Services, Community Action Corporation of South Texas, Coastal Bend Center for Independent Living, Deaf & Hard of Hearing Center of Corpus Christi, Area Agency on Aging of the Coastal Bend

- **Texas A&M University**

# Outcome of Inventory & Lessons Learned

- Extensive information and statistics on transportation services in the region
- Taxi services in the rural areas are nonexistent or not sustainable
- Challenge to getting adequate responses from smaller or new providers
- Untapped Resources Still Existing
  - Health & Human Service Agencies
  - Religious Based entities
  - Private Trip providers

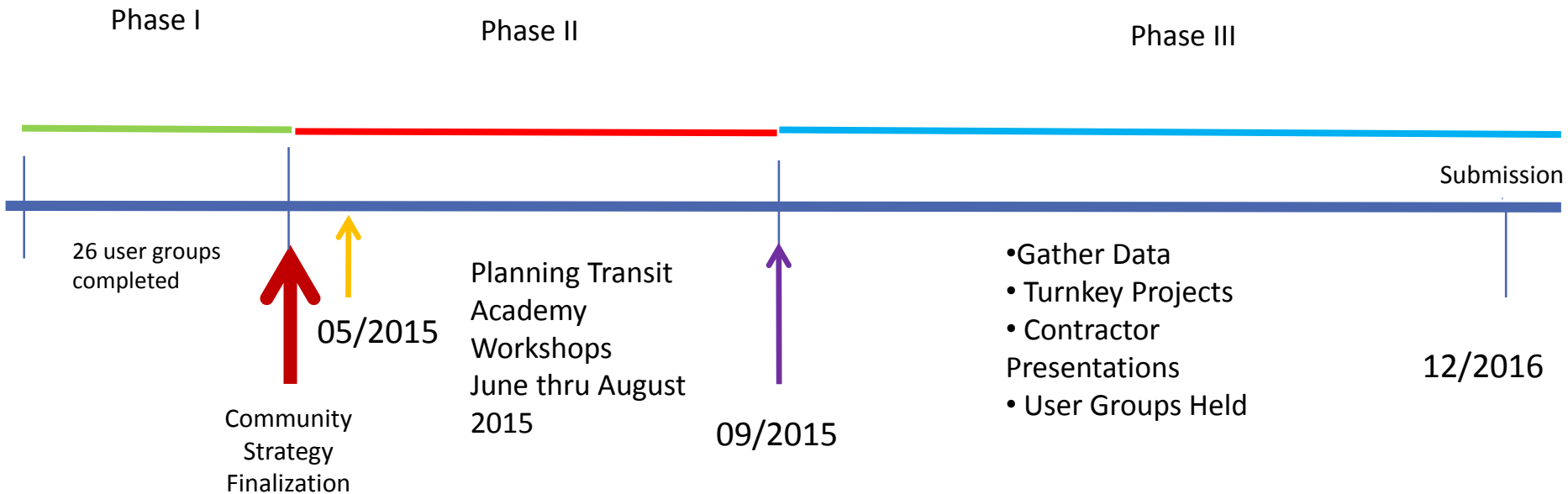
# Continued Gaps

- Two Counties in Service Area: Refugio and Live Oak
- In Coordinated Call requested planning dollars to develop two County Specific Plans
- Additional Plan Chapter

Live Oak County Transportation Plan  
Refugio County Transportation Plan



# Current Approach Review Timeline



# Community Outreach & User Groups Reached April 2015



Counties	Individuals Reached	User Groups
Aransas	92	2
Brooks	12	1
Bee	137	4
Duval	26	1
Jim Wells	55	4
Kleberg	67	2
Live Oak	22	1
Nueces	176	8
Refugio	14	1
San Patricio	5	1

# User Groups

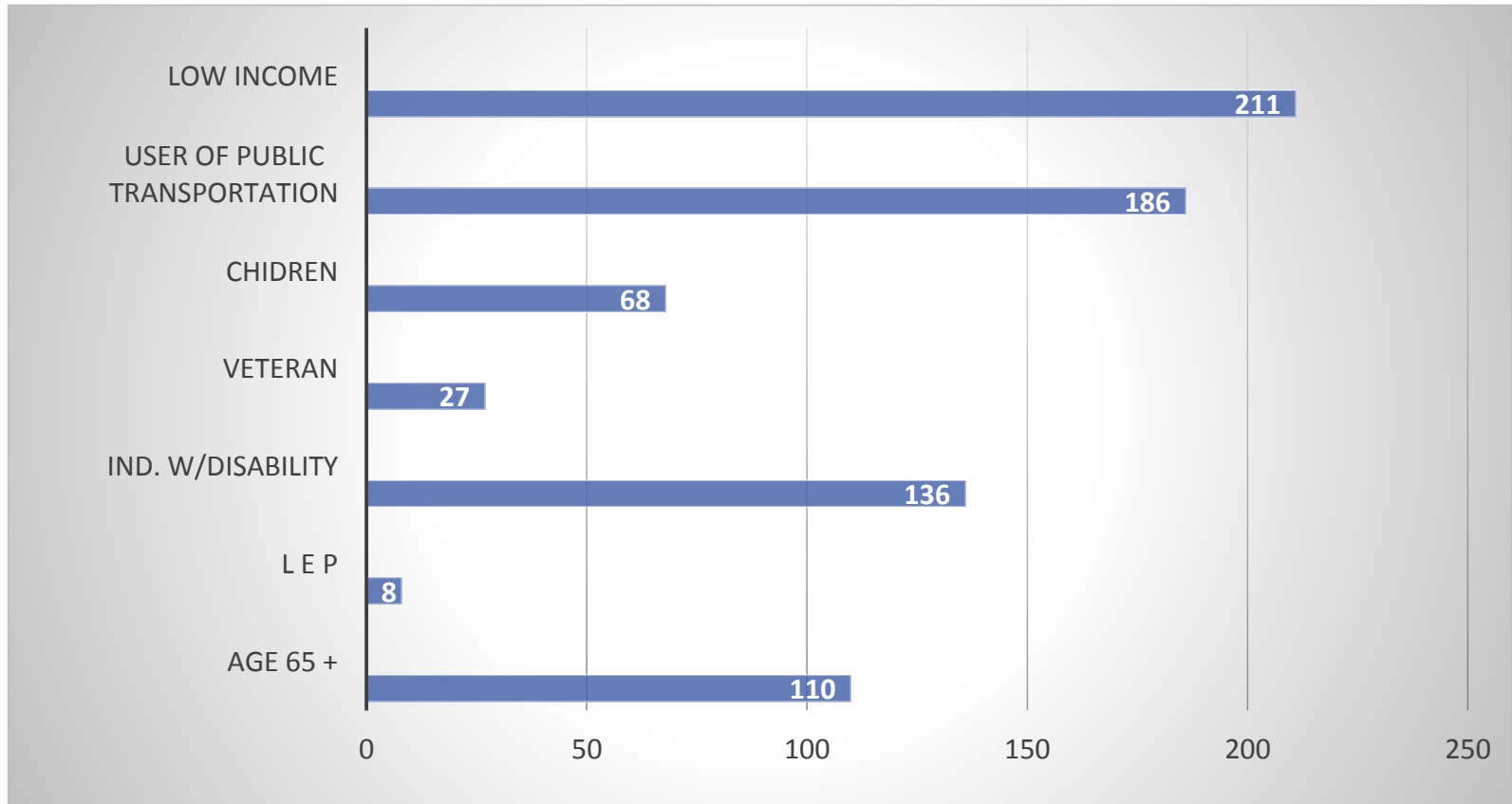
<b>Number of Individuals</b>	<b>504</b>	
Number of Response Forms	344	
Presentations/Groups	26 Completed	30 Attempted*

# Presentations/Discussions

Live Oak Senior Center  
Christus Spohn Coastal  
Bend Health Finder  
Collaborative  
Advisory Council on  
Aging Meeting  
Community Coalition for  
Children and Families  
Meeting  
Corpus Christi  
Metropolitan Planning  
Organization Technical  
Advisory Committee  
(TAC) Meeting  
Corpus Christi Regional  
Transit Authority RCAT  
Meeting  
Nueces County Colonia  
Coalition Meeting

Benavides Civic Center  
Beeville Workforce Solutions  
Beeville Housing Authority Health Fair  
CACOST Congregate Meal Center – Beeville  
La Amistad Adult Care & Activity Center  
Coastal Plains Community Center – Alice  
Coastal Plains Community Center – Kingsville  
Odem Senior Center  
Lighthouse for the Blind  
Rockport Chamber Expo  
Refugio County Senior Services Center  
REAL Day Activity and Health Center – Alice  
REAL Transit – Falfurrias  
REAL Day Activity and Health Center – Premont  
Safe Communities Coalition Meeting

# Individuals Reached



# Stakeholder Feedback

---

- ✓ Complete a thorough review of the current plan, list what is still not accomplished or not addressed, and add or carry over to the new plan.
- ✓ Go to where those that use public transportation live or gather to ensure that they participate in the process for the plan.
- ✓ Get perspectives and input from many people in the in the region
- ✓ Be aware and find a way to address reporting duplications
- ✓ Have outreach and educational materials on the plan readily available throughout the planning process





Answer

**Will Proposed process adequately capture need, gaps & priorities?**

Yes	294	85%
No	6	2%
Don't Know	3	1%
No Response	41	12%

**What steps do we need to take to keep you engaged in this 18 month process?**

Newsletters	181	53%
Presentations	39	11%
Quarterly Email Updates	33	10%
Social Media Updates	21	6%
Ads	4	1%
No Response	66	19%

# Parallel Planning Processes in the Region

---





# How can you help?



**Ensure active, effective and regular participation in development and approval of the plan**

- Pledge of resources
- Financial support
- Staff support
- Services support
- Other resources

Must state exactly what the entity commits to provide

- Representatives of public, private and non-profit transportation providers
- Representatives of human services providers
- Representatives of Metropolitan Planning Organizations



Letters of Commitment

Letters of Support

- Individuals with Disabilities
- Individuals 65 and older
- People with low incomes
- Veterans
- Workforce Agencies
- Advocates for children
- Other members of the public

- Endorsement of Project
- Support of Project

Does not require commitment of resources or active participation in project

**STAFF**

**Gloria Ramos, Executive Director**

**Martín Ornelas, Director**

**Anita Rosas, Project Manager**

**Michelle Martinez, Administrative Coordinator**

**Transportation Coordination Network of the Coastal Bend**

**301 Lucero St.**

**Alice, TX 78332**

**361.664-7TCN (826)**

**[martin.ornelas@tcncb.org](mailto:martin.ornelas@tcncb.org)**

**[anita.rosas@tcncb.org](mailto:anita.rosas@tcncb.org)**

**[michelle.martinez@tcncb.org](mailto:michelle.martinez@tcncb.org)**

**[www.tcncb.org](http://www.tcncb.org)**