

Ark-Tex Council of Governments (ATCOG)

Regionally Coordinated Public
Transportation Plan

Appendices A-G

May 2022

Table of Contents

Appendix A: Transportation Resources.....	2
Appendix B: Transit Need by County.....	4
Bowie County.....	4
Cass County.....	6
Delta County.....	7
Franklin County.....	8
Hopkins County.....	9
Lamar County.....	10
Morris County.....	11
Red River County.....	12
Titus County.....	13
Appendix C: Service Details.....	14
Appendix D: List of Partners.....	16
Appendix E: Steering Committee.....	17
Appendix F: Public Feedback Strategies.....	18
Public Survey Results.....	18
Quality of Service.....	18
Survey Respondent Demographics.....	21
Appendix G: Contact information for Human Services Organizations.....	23

NOTE: *This document contains the Appendices A-G for the 2021 Ark-Tex Council of Governments (ATCOG) Regionally Coordinated Transportation Plan (RCTP). The contents of this document should be used in conjunction with the 2021 ATCOG RCTP to understand the analyses completed, agencies contacted, and stakeholders engaged during the development of the RCTP.*

REGIONALLY COORDINATED PUBLIC TRANSPORTATION PLAN APPENDICES A-G

This document was prepared by:

Ark-Tex Council of Governments (ATCOG)

In cooperation with:

The Texas Department of Transportation (TxDOT)

The document was reviewed and approved by:

Ark-Tex Council of Governments (ATCOG)

on INSERT DATE OF BOARD APPROVAL

Appendix A: Transportation Resources

Table A 1 - Transportation Resources in the Region

Provider Name	Type of Agency	Service Type	Service Area
Lone Star Cab	Private Taxi	Demand Response	Paris, TX
Xpress NEMT LLC	Private Bus Service	Demand Response	Paris, TX
Medical Transportation	Non-Emergency Transportation	Demand Response	Anderson, Angelina, Bowie, Cass, Cherokee, Delta, Franklin, Gregg, Harrison, Hopkins, Houston, Lamar, Marion, Morris, Nacogdoches, Panola, Rains, Red River, Rusk, Sabine, San Augustine, Shelby, Smith, Titus, Trinity, Upshur, Van Zandt, and Wood County
ArTex Taxi	Private Taxi	Demand Response	Texarkana, Shreveport, Ashdown
Haven Homes	Health & Human Services (Client-Focused)	Demand Response	Texarkana, TX
Christus St. Michael Express Care	Non-Profit	Demand Response	30 Mile Radius (Hopkins)
OPPORTUNITIES INC	Health & Human Services (Client-Focused)	Everyday Living	Bowie County, Miller County, Little River County
Veterans Administration	Health & Human Services (Client-Focused)	Demand Response	Miller County, Bowie County, Shreveport County
Cornerstone Retirement Center	Health & Human Services (Client-Focused)	Demand Response	Texarkana Metro Area
Hands on Texarkana	Non-Profit	Demand Response	Texarkana Metro Area
Northeast Texas Community College	Non-Profit	Demand Response	Students From Morris County, Titus County, Camp, Upshur

Provider Name	Type of Agency	Service Type	Service Area
TRAX	Public Transportation Service	Demand Response	Bowie County, Cass County, Delta County, Franklin County, Hopkins County, Lamar County, Morris County, Red River County and Titus County
Paris Metro	Public Transportation Service	Fixed Route	Paris, TX
T-Line Texarkana Urban Transit District	Public Transportation Service	Fixed Route	Texarkana, TX
ADA Paratransit	Public Transportation Service	Demand Response	Lamar County
ADA Paratransit (Tex-Ark)	Public Transportation Service	Demand Response	Texarkana, TX

Appendix B: Transit Need by County

This section takes an in-depth look at each county to determine the driving forces of the TNI score. The scores shown in this section are reported at the census tract level to illustrate the varied distribution of vulnerable populations within the county. In the following sections demographic distributions will be compared to the service area.¹

Bowie County

Bowie County, with its seat in Texarkana, has lower rates of seniors, disabled people, or people with limited English proficiency, as well as lower proportions of rural households compared to the service area. This is because most tracts fall in the Texarkana urban area. Most of Bowie County's tracts have higher proportions of households without vehicles, people in poverty, or non-White populations when compared to the service area (Table B 1). Many tracts in the Texarkana area, and rural tracts to the west, are considered "moderate" transit need (Figure B 1).

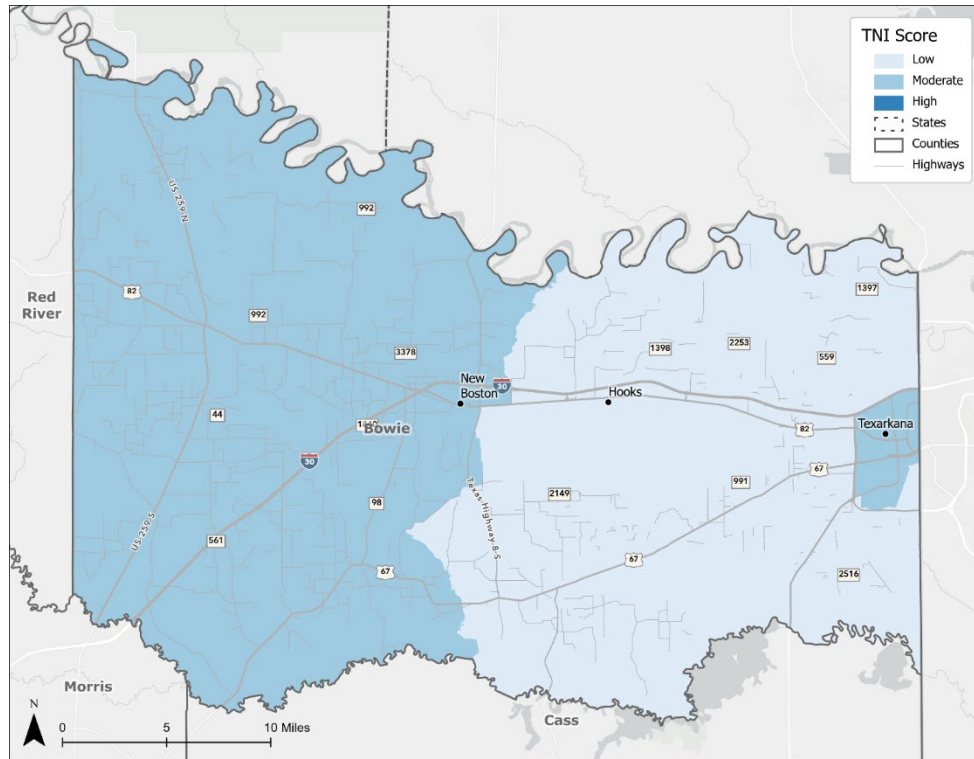
Number of Census Tracts: 18

Table B 1: Driving Demographics for Moderate TNI Scores – Bowie County

Key Demographic Group	% of Census Tracts Exceeding Average for ATCOG Service Area
Households without Vehicles	50%
Senior Population	27.8%
Disabled Population	22.2%
Non-White Population	55.5%
Population Living in Poverty	50%
Rural Housing Units	33.3%
Population with Limited English Proficiency	22.2%

¹ Data for this section was obtained using American Community Survey (ACS) 5-Year Estimates (2015-2019) and the 2010 Decennial Census. Additional details regarding methodology can be found in Chapter 3.1 of the ATCOG RCTP (2021).

Figure B 1: Bowie County Transit Need Index Scores



Cass County

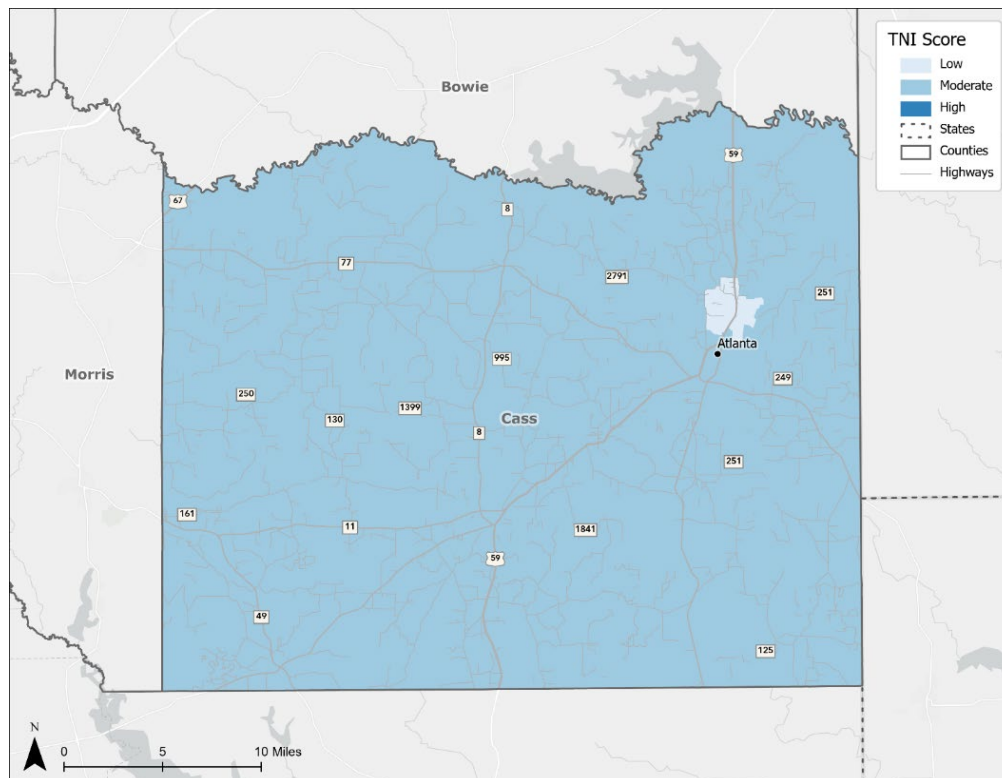
Most of Cass County has a higher number of households without vehicles, senior population, people with disabilities, and rural households when compared to the ATCOG service area. Most census tracts have lower rates of non-White people, and none exceed the average rate of people with limited English proficiency. The seat of Cass County is Atlanta.

Number of Census Tracts: 7

Table B 2: Driving Demographics for Moderate TNI Scores – Cass County

Key Demographic Group	% of Census Tracts Exceeding Average for ATCOG Service Area
Households without Vehicles	57.1%
Senior Population	85.7%
Disabled Population	85.7%
Non-White Population	14.3%
Population Living in Poverty	42.9%
Rural Housing Units	71.4%
Population with Limited English Proficiency	0%

Figure B 2: Cass County Transit Need Index Scores



Delta County

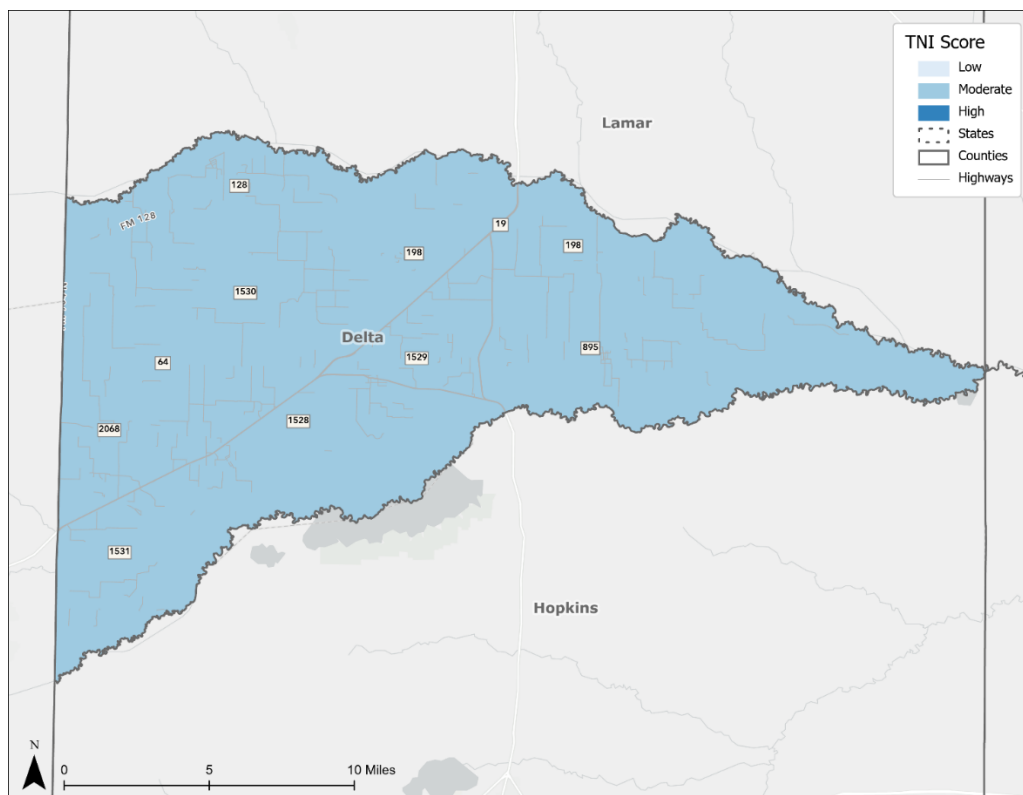
Delta County has uniformly higher senior population, disabled population, and rural households when compared to the service area. However, rates of population with limited English proficiency and non-White population are consistently lower than the service area. Both census tracts in Delta County are regarded as having “moderate” transit need.

Number of Census Tracts: 2

Table B 3: Driving Demographics for Moderate TNI Scores - Delta County

Key Demographic Group	% of Census Tracts Exceeding Average for ATCOG Service Area
Households without Vehicles	50%
Senior Population	100%
Disabled Population	100%
Non-White Population	0%
Population Living in Poverty	50%
Rural Housing Units	100%
Population with Limited English Proficiency	0%

Figure B 3: Cass County Transit Need Index Scores



Franklin County

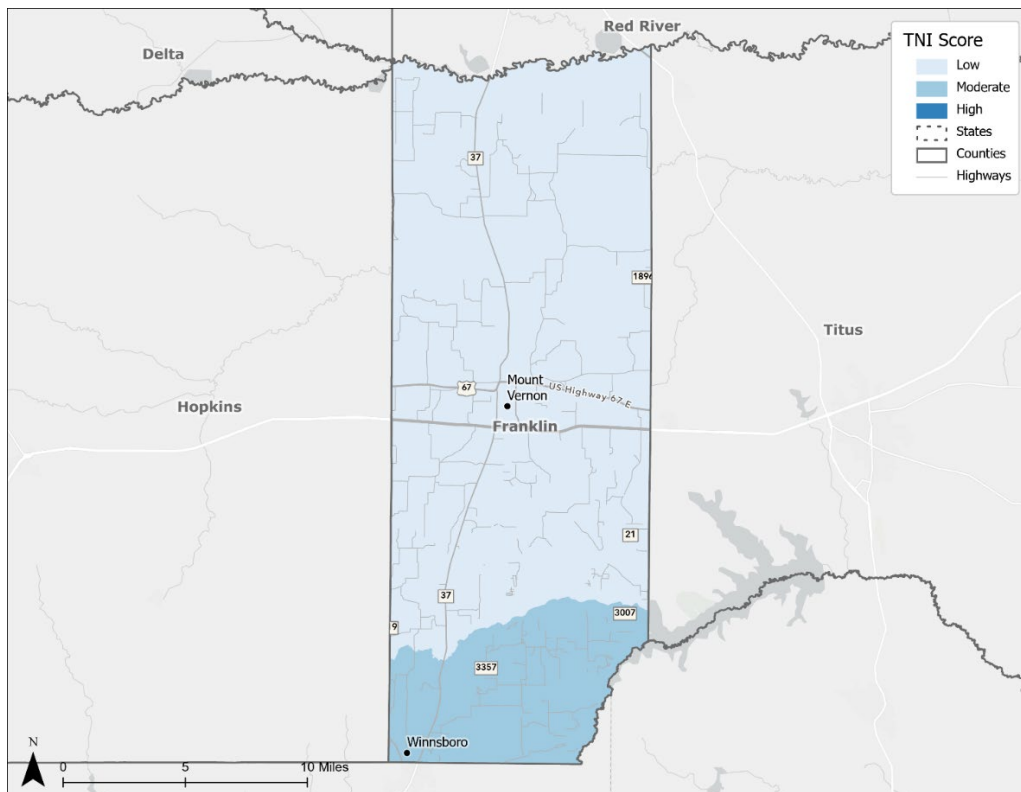
None of Franklin County's census tracts have a higher poverty rate than the overall service area, nor a higher rate of households without vehicles. Two of the three tracts rank as higher than average for rural households and senior population. Most of the county is ranked as having "low" transit need, save for the tract containing Winnsboro in the south, which is considered "moderate".

Number of Census Tracts: 3

Table B 4: Driving Demographics for Moderate TNI Scores - Franklin County

Key Demographic Group	% of Census Tracts Exceeding Average for ATCOG Service Area
Households without Vehicles	0%
Senior Population	66.7%
Disabled Population	33.3%
Non-White Population	33.3%
Population Living in Poverty	0%
Rural Housing Units	66.7%
Population with Limited English Proficiency	33.3%

Figure B 4: Franklin County Transit Need Index Scores



Hopkins County

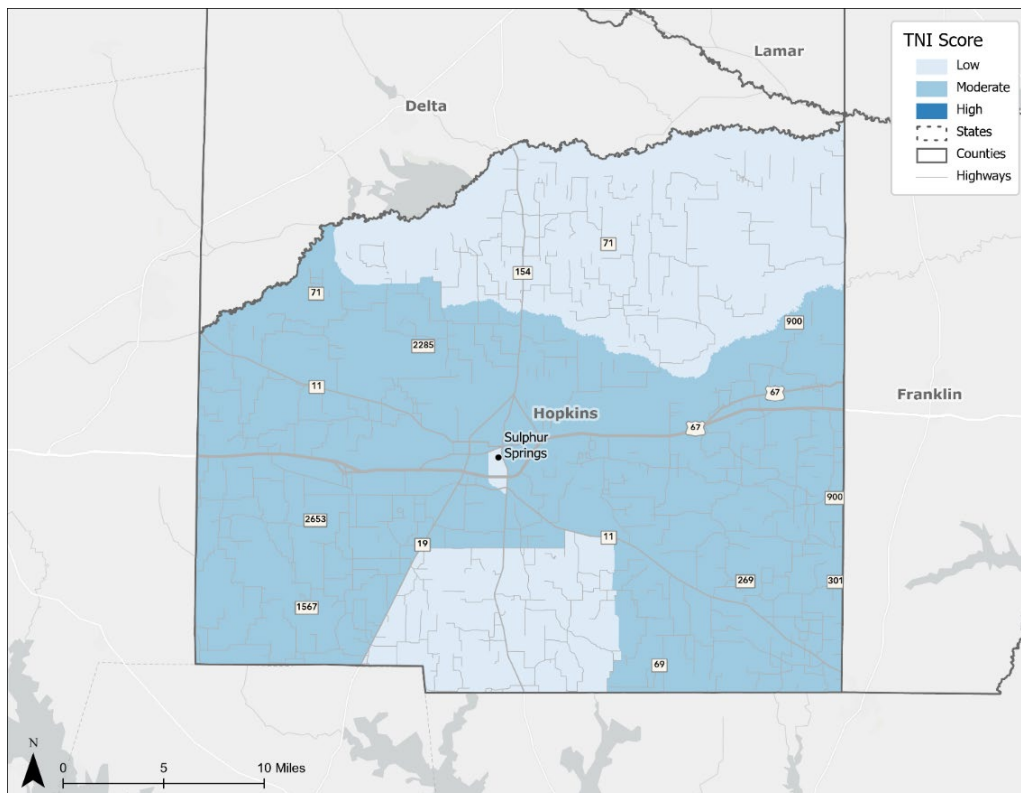
Hopkins County, centered on Sulphur Springs, has higher rates of senior population and rural households than the overall service area. Most tracts have lower than average rates of households without vehicles or people living in poverty. Most of the county's nine (9) census tracts have "moderate" transit need.

Number of Census Tracts: 9

Table B 5: Driving Demographics for Moderate TNI Scores - Hopkins County:

Key Demographic Group	% of Census Tracts Exceeding Average for ATCOG Service Area
Households without Vehicles	22.2%
Senior Population	55.6%
Disabled Population	44.4%
Non-White Population	33.3%
Population Living in Poverty	44.4%
Rural Housing Units	55.5%
Population with Limited English Proficiency	33.3%

Figure B 5: Hopkins County Transit Need Index Scores



Lamar County

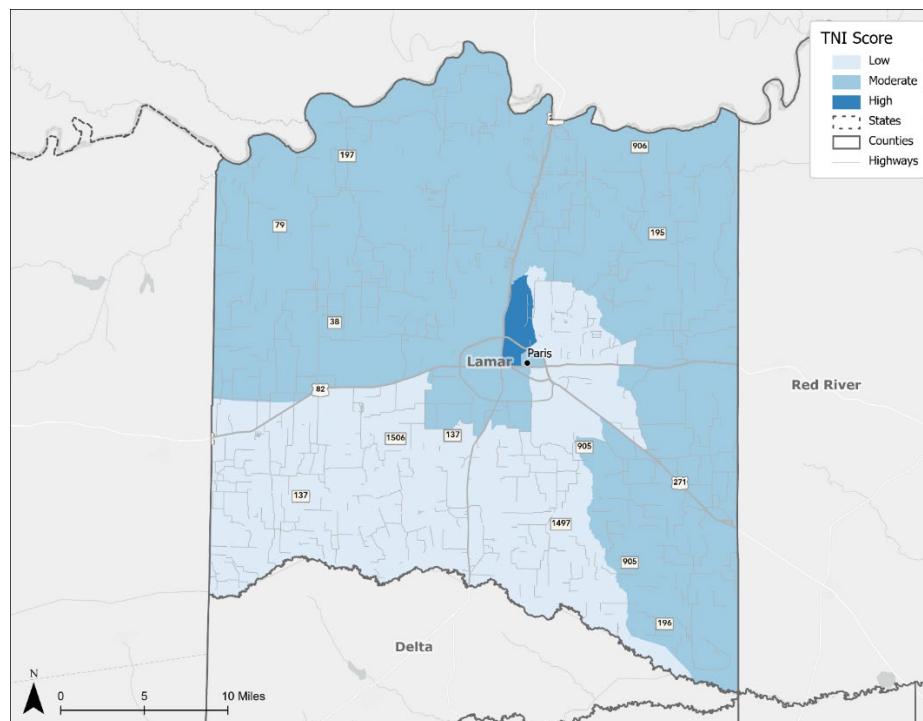
Lamar County, with its seat in Paris, has higher than average rates of people with disabilities and people living in poverty. Notably, the county has a lower rate of non-White people, rural households, and population with limited English proficiency when compared to the study area. In the northeast part of Paris, though, several factors combine to give that tract a transit need score of “high” – higher rates for all key demographic populations when compared to the study area, except for rural housing units.

Number of Census Tracts: 12

Table B 6: Driving Demographics for Moderate TNI Scores - Lamar County

Key Demographic Group	% of Census Tracts Exceeding Average for ATCOG Service Area
Households without Vehicles	50%
Senior Population	50%
Disabled Population	91.7%
Non-White Population	33.3%
Population Living in Poverty	66.7%
Rural Housing Units	33.3%
Population with Limited English Proficiency	33.3%

Figure B 6: Lamar County Transit Need Index Scores



Morris County

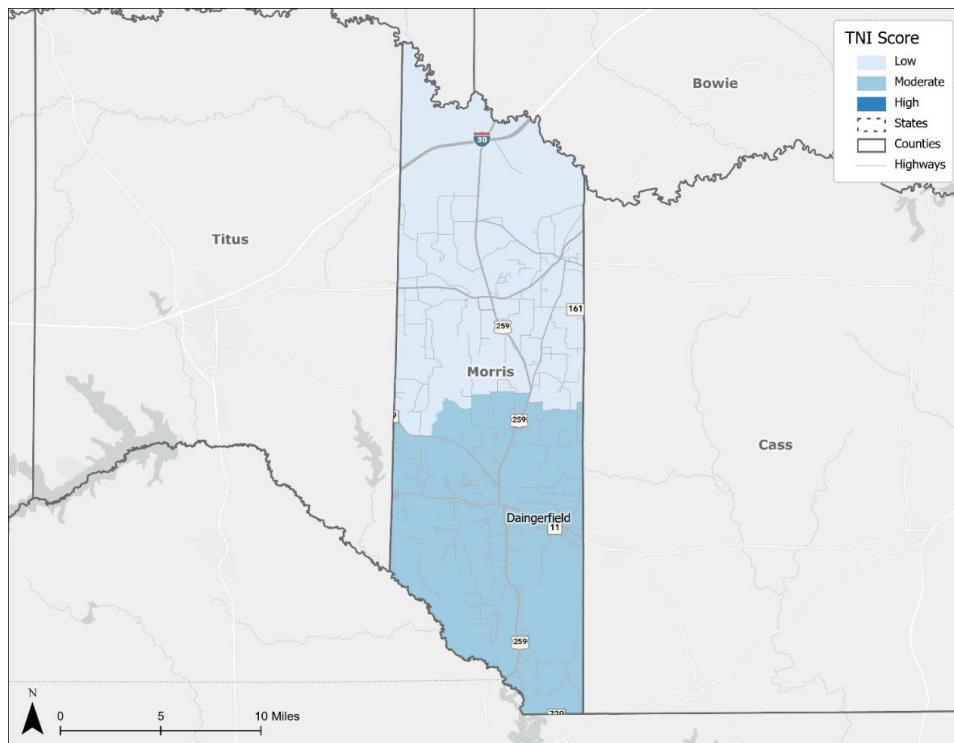
Two-thirds of Morris County census tracts exceed the service area average for senior population, population living in poverty, and rural housing units. For the other three (3) demographic characteristics, only one of the three (3) census tracts exceeds the service area average. The Morris County seat is Daingerfield, which falls in an area of “moderate” transit need.

Number of Census Tracts: 3

Table B 7: Driving Demographics for Moderate TNI Scores - Morris County

Key Demographic Group	% of Census Tracts Exceeding Average for ATCOG Service Area
Households without Vehicles	66.7%
Senior Population	66.7%
Disabled Population	33.3%
Non-White Population	33.3%
Population Living in Poverty	66.7%
Rural Housing Units	66.7%
Population with Limited English Proficiency	33.3%

Figure B 7: Morris County Transit Need Index Scores



Red River County

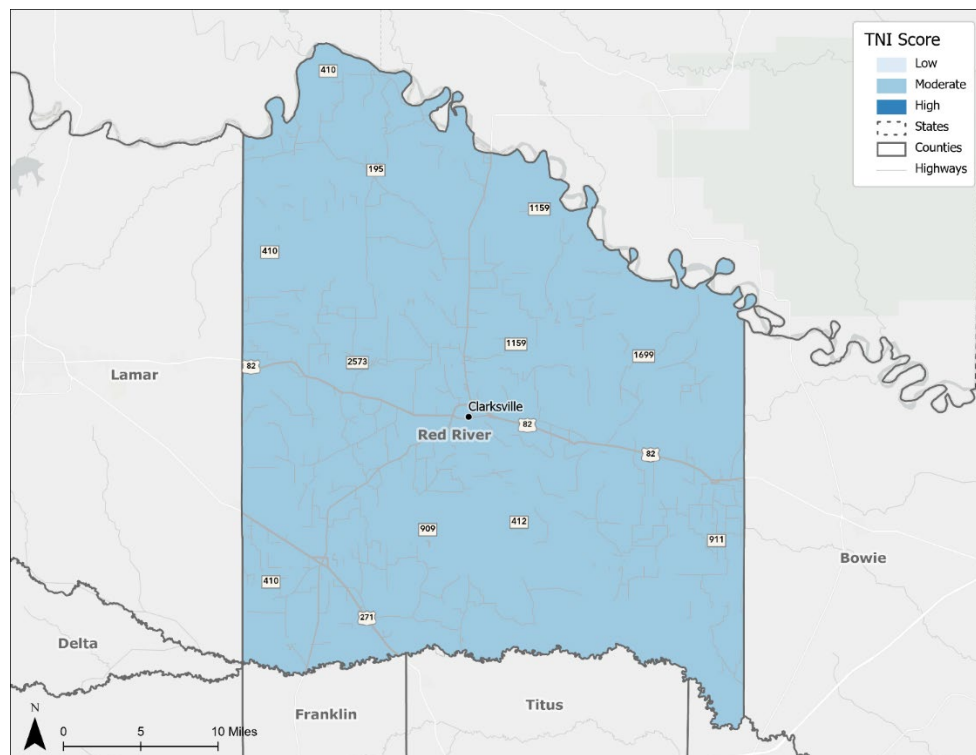
Red River County is uniformly higher than average for senior population, and mostly higher than average for senior population, disabled population, and population living in poverty, demonstrated by a uniformly “moderate” transit need score. The one characteristic for which all Red River County’s tracts are lower than average is the population with limited English proficiency. The county seat of Red River County is Clarksville

Number of Census Tracts: 4

Table B 8: Driving Demographics for Moderate TNI Scores - Red River County

Key Demographic Group	% of Census Tracts Exceeding Average for ATCOG Service Area
Households without Vehicles	50%
Senior Population	100%
Disabled Population	75%
Non-White Population	25%
Population Living in Poverty	75%
Rural Housing Units	75%
Population with Limited English Proficiency	0%

Figure B 8: Red River County Transit Need Index Scores



Titus County

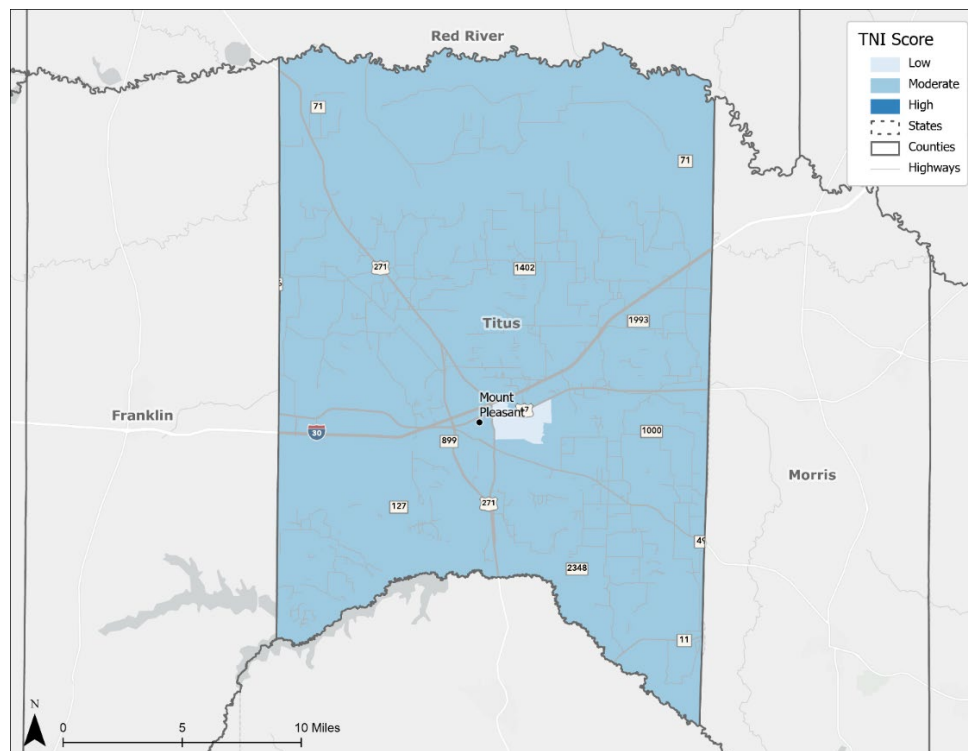
Titus County, with its seat in Mount Pleasant, has a significantly higher Hispanic/Latino population than the rest of the service area, and accordingly most of the county has higher percentages of non-White people than most other parts of the service area, as well as a higher rate of people with limited English proficiency. In most other key characteristics, however, most of the county has lower than average rates. Thus, Titus County's tracts are all either "low" or "moderate" transit need.

Number of Census Tracts: 8

Table B 9: Driving Demographics for Moderate TNI Scores - Titus County

Key Demographic Group	% of Census Tracts Exceeding Average for ATCOG Service Area
Households without Vehicles	25%
Senior Population	25%
Disabled Population	12.5%
Non-White Population	87.5%
Population Living in Poverty	37.5%
Rural Housing Units	50%
Population with Limited English Proficiency	87.5%

Figure B 9: Titus County Transit Need Index Scores



Appendix C: Service Details

Table C 1: Maximum Quality-of-Service Indicator Scores

Indicator	Maximum Points Available
Service Time Accessibility	31
Ease of Use	7
ADA Accessibility	3
General Access	9
Maximum Score	50

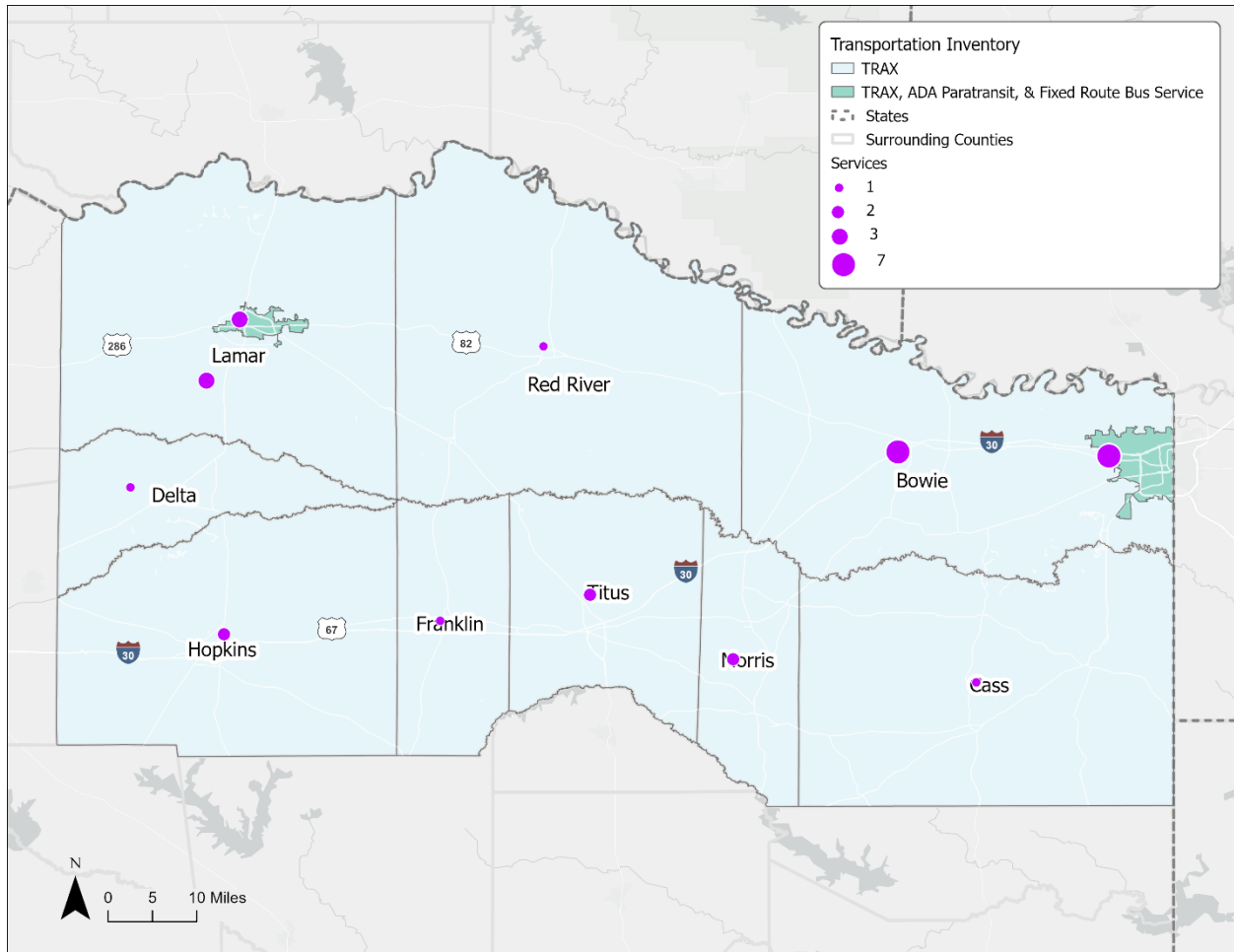
Table C 2: Transportation Providers

Transportation Provider / Human Service	Days of Operation	Hours of Operation	Service Area
ADA Paratransit	Mon.-Fri.	6:30am-6:30pm	Paris, TX
ADA Paratransit	Mon.-Fri.	6:30am-6:30pm	Texarkana, TX
Paris Metro	Mon.-Fri.	6:30am-6:30pm	Paris, TX
TRAX	Mon.-Fri.	7am-4pm	All Counties
T-Line Texarkana Urban Transit District	Mon.-Fri.	5:30am-6:30pm	Texarkana, TX

Table C 3: Human Service Organizations with Transportation Services

Transportation Provider / Human Service	Days of Operation	Hours of Operation	Service Area
ArTex Taxi	Sun.-Sat.	12am-12midnight	Bowie
Christus Mother Frances Hospital	Sun.-Sat.	12am-12midnight	Hopkins
Cornerstone Retirement Center	Mon.-Fri.	8am-5pm	Bowie
Hands on Texarkana	Mon.-Fri.	8am-5pm	Bowie
Haven Homes	Mon.-Fri.	8am-5pm	Bowie
Lone Star Cab	Mon.-Sat.	5am-8pm	Lamar
Medical Transportation	Unknown	12am-12midnight	All
Northeast Texas Community College	Mon.-Fri.	8am-5pm	Bowie
Opportunities Inc.	Mon.-Fri.	5:30am-6:30pm	Bowie
Veterans Administration	Mon.-Fri.	6:30am-2:30pm	Bowie
Xpress NEMT LLC	Sun.-Sat.	12am-12midnight	Lamar

Figure C 1: Transportation Inventory



Human Service Organizations are concentrated in Bowie County and Lamar County with additional attention in the cities of Paris and Texarkana. The Cass, Delta, and Red River counties have the fewest human service organizations and are each only serviced by TRAX.

Table C 4: Transportation Provider Fleet Size

Transportation Provider / Human Service	Service Area	Number of Vehicles in Fleet
ADA Paratransit	Paris, TX	1
ADA Paratransit	Texarkana, TX	4
Paris Metro	Paris, TX	9
TRAX	All Counties	51
T-Line Texarkana Urban Transit District	Texarkana, TX	15
Total		80

Appendix D: List of Partners

Table D 1: List of Partners

Organization	Role	Name	Email
Northeast Texas Community College	Senior Adult Planning Committee for NETCC	Martha Baker	bbaker554@aol.com
The Randy Sam's Shelter	Case Manager	Tiffany James	tiffany.james@randysams.org
Mission Texarkana	Manager	Cody Howard	choward@tfc.org
United Way of Greater Texarkana	NA	Mark Bledsoe	mbledsoe@texarkanaunitedway.org
United Way of Greater Texarkana	NA	Molly Riley	molly@texarkanaunitedway.org
Texas A & M of Texarkana	NA	Carl Greig	Carl.greig@tamut.edu
Express Personnel	NA	Penny Everett	penny.everett@expresspros.com
UAMS-University of Arkansas Medical Sciences	NA	Jackie Pierce	jmpierce@uams.edu
UAMS-University of Arkansas Medical Sciences	NA	Tammy Duran	tmduran@uams.edu
TWU-Texarkana Water Utilities-UWGT	NA	NA	pwhite@txkusa.org

Appendix E: Steering Committee

Table E 1: Steering Committee List

Organization	Name	Email	Service Description
Senior Adult Planning Committee	Martha Baker	bbaker554@aol.com	Senior Services
Randy Sams Shelter	Tiffany James	tiffany.james@randysams.org	Homeless Services
Mission Texarkana	Cody Howard	choward@tfc.org	Homeless Services
Texarkana VA Outpatient Clinic	NA	NA	Veterans Services
Express Personnel/Pros	Penny Everett	penny.everett@expresspros.com	Workforce Services
UAMS	Tammy Duran	Tmduran@uams.edu	Medical (caseworker)
Lamar County United Way	Jenny Wilson	jenny.wilson@lamarcountyuw.org	Community Support
Ram Foundation	Dede Fasken	dedefasken@yahoo.com	Community Support
Habitat for Humanity	Judy Martin	parishabitat@suddenlinkmail.com	Homeless Services
North Lamar High School Transition coordinator	Gylnese McNabb	gmcnabb@northlamar.net	Transitional Support for Special Needs
The Kings Daughters	Kay McNeal	kdparis@att.net	Medical/Food
PJC- Adult Education	Susan Sanchez	ssanchez@parisjc.edu	Educational Services
UAMS	Jackie Williams	JMPierce@uams.edu	Medical (D.O.N)

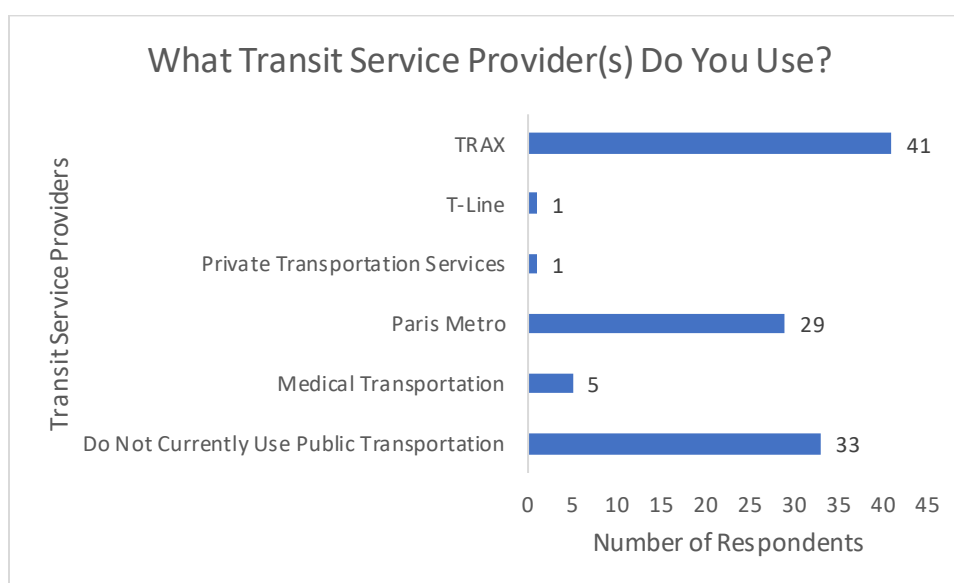
Appendix F: Public Feedback Strategies

A survey was conducted to gather public opinion on the existing transportation services. Physical copies of the survey were available for the public at the ATCOG offices, local job fairs, and health fairs attended by ATCOG. A link to a digital version of the survey was available on the ATCOG Facebook page; this same link was emailed directly to stakeholders to distribute to their clients as well. The survey was available in English and Spanish. The survey was available from August 19th, 2021, to October 18th, 2021, and collected 103 responses.

Public Survey Results

The survey questions gathered feedback on the quality and accessibility of transportation services within the region. Figure F 1 highlights the main methods of transportation survey respondents use.

Figure F 1: Survey Respondent Methods of Transportation



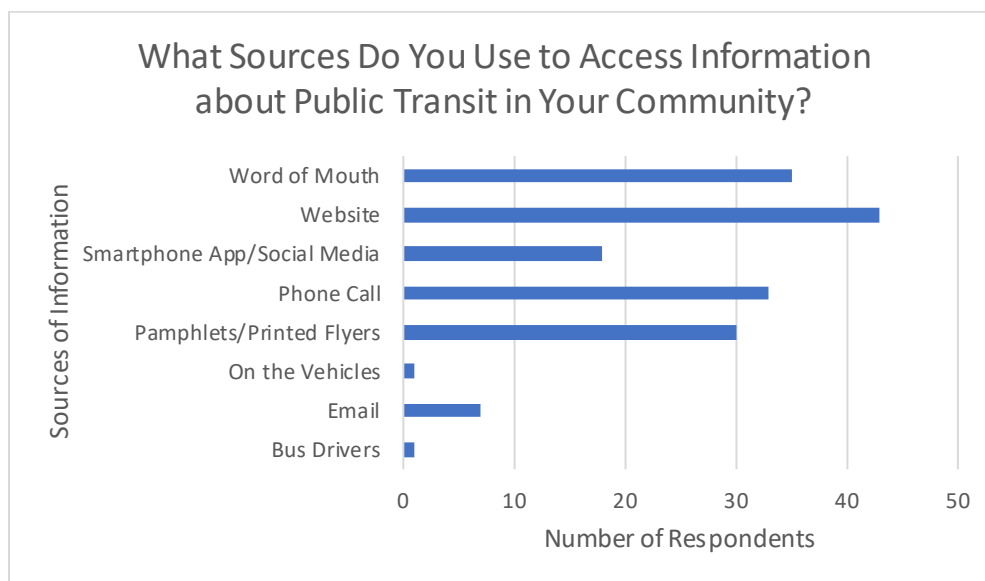
Thirty-three of the survey responses to this question (approximately 40 percent) were from individuals who do not currently use public transportation. More than half (64.4 percent) of respondents normally drive alone, carpool, or utilize private ride share services. Survey respondents who use the existing services primarily use TRAX or Paris Metro.

Quality of Service

Most of the survey questions aimed to understand the perception of transportation services available in the study area. These questions focused on the information available about the existing services, costs to utilize transportation, assistance needed when traveling, and the overall availability of services. Respondents were also asked about why they use public transportation, where they are going when they travel, and potential changes that could cause them to use public transit more often.

Information about Public Transportation

Figure F 2 illustrates how survey respondents gain information about the public transit services in their communities. Survey respondents predominantly access information about public transit via websites and word of mouth.

Figure F 2: Sources of Information about Public Transit

Most survey respondents (74.2 percent) indicated that information about transportation services is clear and easy to find but 8.2 percent of respondents disagreed, and another 17.5 percent were neutral. In the open response section of the survey two respondents expressed desire for information to be available in more places:

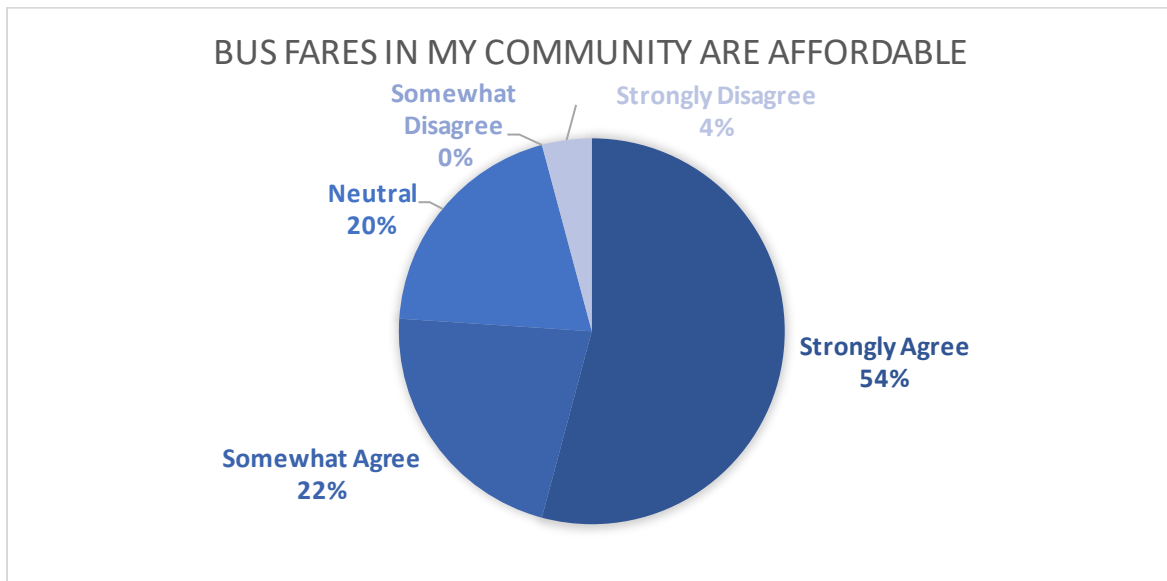
- “My neighbors have said they wish there was somewhere to get transportation [routes] other than online...”
- “Information should be in more places. Basic information to be delivered through local mail on contact information, routes, costs”

Comments gathered during public meetings also indicated a desire for information to be shared offline and in public spaces.

Cost

Ninety-six survey respondents provided a response to questions about the bus fares in the study area, their responses are illustrated in Figure F 3. Fifty-four percent of respondents indicated that they strongly agree that fares are affordable. Four percent of these respondents indicated that they strongly disagree that fares are affordable.

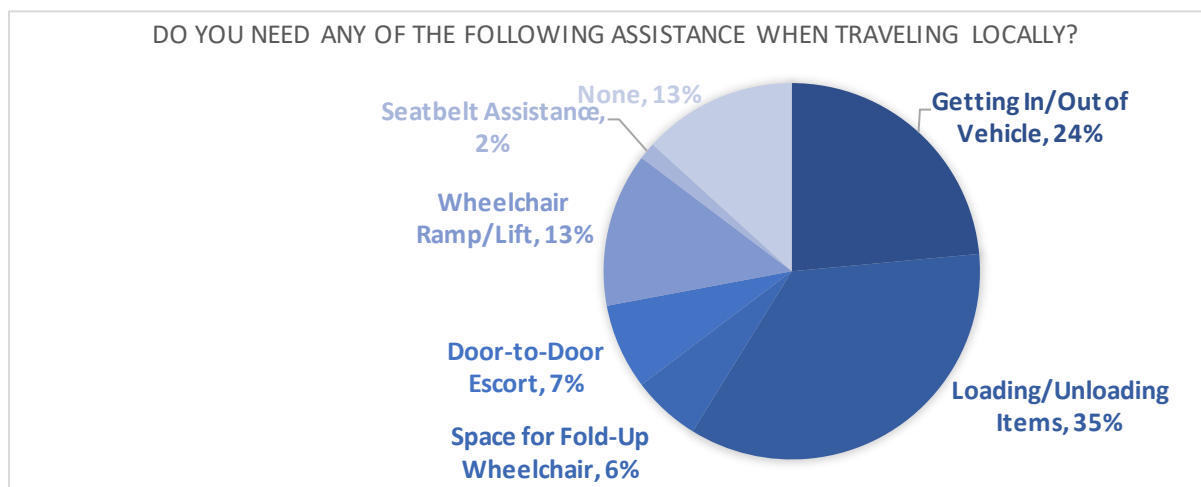
Figure F 3: Public Perception about Bus Fares



Travel Assistance

52 survey respondents provided a response to questions about assistance needed when traveling, their responses are illustrated in Figure F 4. Most respondents noted that they require assistance loading or unloading items or getting in and out of the vehicle. Similarly, 21.3 percent of survey respondents indicated that they are not comfortable walking to the bus stop and waiting for the bus to arrive. In a separate question, 35.8 percent of respondents indicated that they have trouble getting on or off the bus.

Figure F 4: Assistance Needed When Traveling

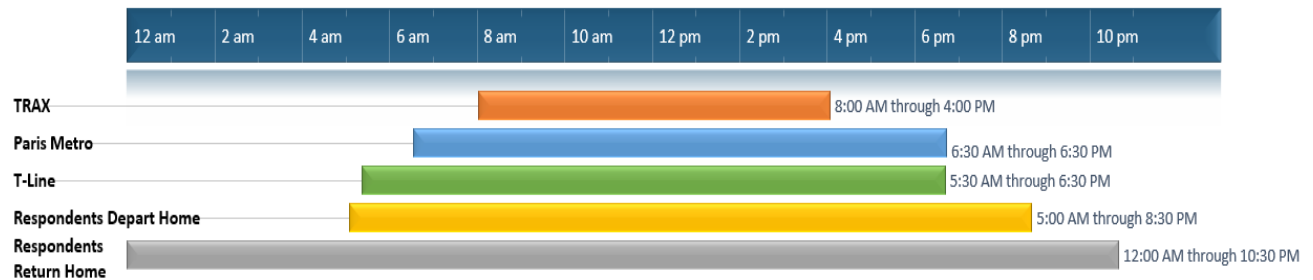


Availability

Survey respondents were asked to indicate what time they leave their homes on a typical day. Figure F 5 indicates the departure and return times survey respondents noted compared to the hours of operation for each transportation service provider.

Responses ranged from 5:00 a.m. to 8:30 p.m. but most respondents typically leave their homes between 7:00 a.m. to 10:00 a.m. When prompted about the time they return to their homes on a typical day, responses ranged from 12:00 a.m. to 10:30 p.m. The bulk of respondents return home between 1:00 p.m. to 8:00 p.m.

Figure F 5: Service Time Availability Compared to Respondent Travel Time



TRAX is the only service provider that operates throughout the entire region. TRAX operates between 8:00 a.m. to 4:00 a.m. Paris Metro and the Texarkana Urban Transit District (T-Line) both operate within their respective city borders. Paris Metro operates between 6:30 a.m. to 6:30 p.m. in Paris, TX. The T-Line operates in Texarkana, TX, between 5:30 a.m. to 6:30 p.m.

Survey Respondent Demographics

Figure F 6 provides the ages of the survey respondents. Most respondents (67.6 percent) were 45 or older, 15.7 percent were between the ages of 25-44, 8.8 percent were between the ages of 18-24, 1 percent was under 18, and 6.9 percent chose not to provide their age.

Figure F 6: Survey Respondents Age Range

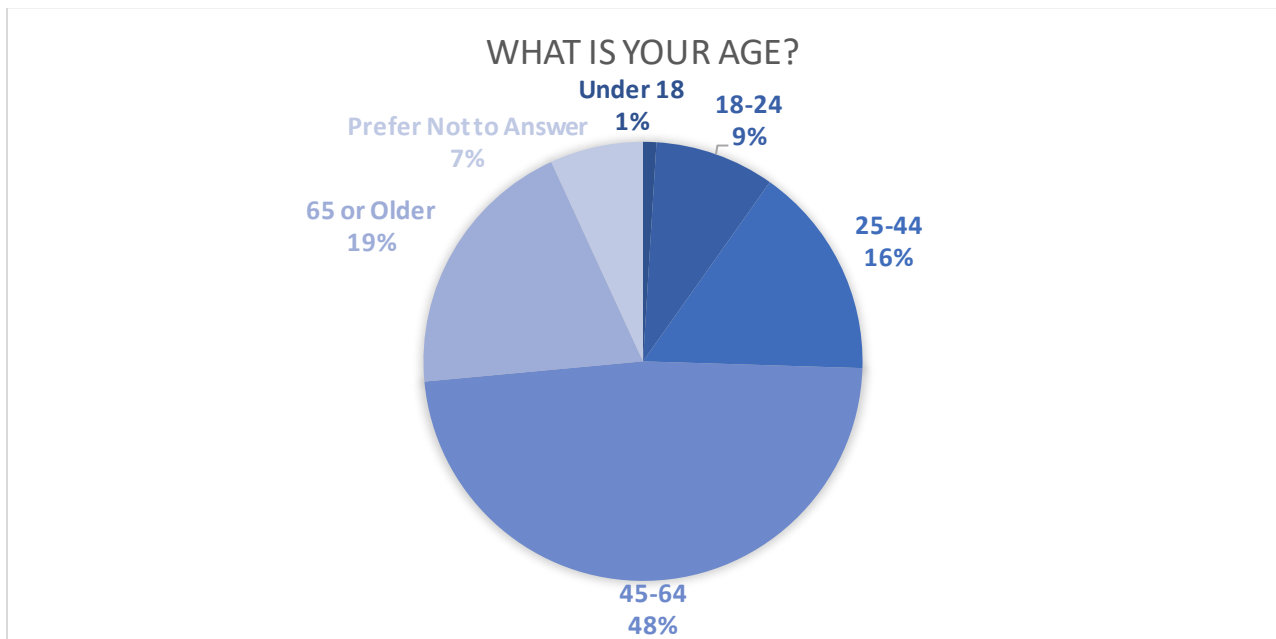
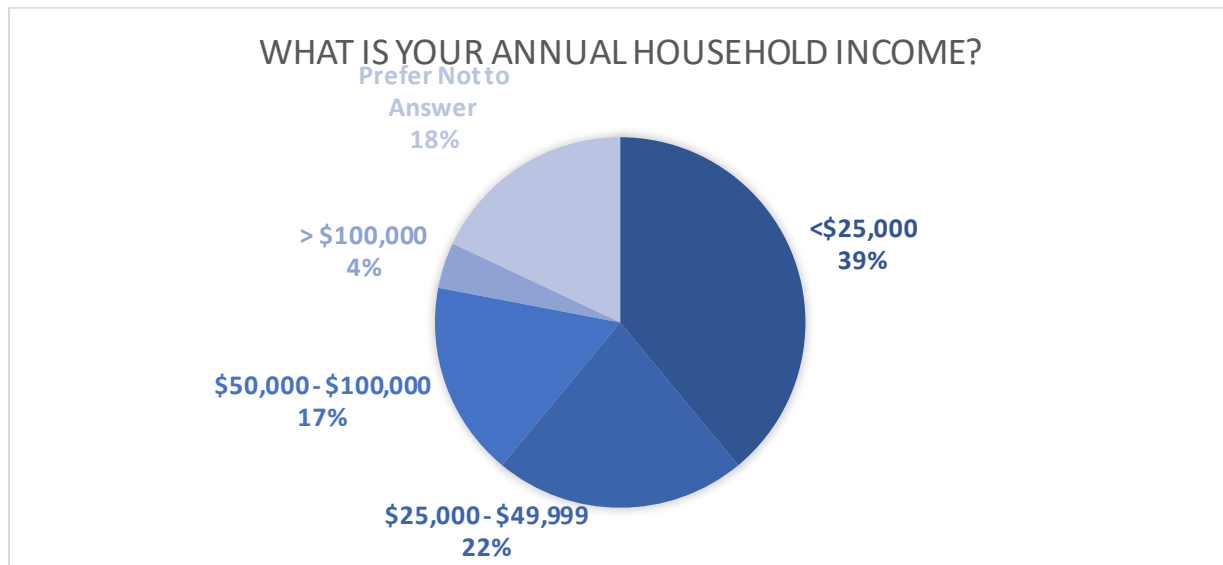


Figure F 7 discloses the annual household income of survey respondents. Most respondents earned an annual household income below \$25,000. Approximately 78 percent of the respondents reported a household income below \$50,000.

Figure F 7: Survey Respondent Income



Appendix G: Contact information for Human Services Organizations

Table G 1: Contact Information for Human Services Organizations

Organization	Job Title	Category	Business Phone	Address	County
Opportunities Inc.	Transportation Supervisor	Assisted Living	903-791-2995	6101 N State Line Ave, Texarkana, TX 75501	Bowie
Brentwood Terrace Healthcare & Rehabilitation	Transportation Coordinator	Hospital	903-784-4111	2885 Stillhouse Rd, Paris, TX 75462	Lamar
Christus St Michael	Transportation Coordinator	Hospital	903-614-1000	2600 St Michael Dr, Texarkana, TX 75501	Bowie
Legend Healthcare and Rehabilitation	Transportation Coordinator	Hospital	903-737-9820	520 8th St, Paris, TX 75462	Lamar
Linden Healthcare Center	Transportation Coordinator	Hospital	903-756-5537	1201 West Houston St, Linden, TX 75563	Cass
Stillhouse Rehabilitation & Healthcare	Transportation Coordinator	Hospital	903-785-1601	2900 Stillhouse Rd, Paris, TX 75462	Lamar
Wadley Regional Medical Center	Transportation Coordinator	Hospital	903-798-8000	1000 Pine St, Texarkana, TX 75501	Titus
Autumn Wind Assisted Living	Transportation Coordinator	Nursing Home	903-342-3388	1004 East Coke Rd, Winnsboro, TX 75494	Hopkins

Organization	Job Title	Category	Business Phone	Address	County
Christian Care Center	Transportation Coordinator	Nursing Home	903-831-1720	8 E Midway Dr, Texarkana, TX 75501	Bowie
Cornerstone Retirement Community	Transportation Coordinator	Nursing Home	903-832-5515	4100 Moores Ln, Texarkana, TX 75503	Bowie
Country Homes Estates	Transportation Coordinator	Nursing Home	903-886-7754	4927 Monroe St, Commerce, TX 75428	Hopkins
Cowhorn Creek Estates	Transportation Coordinator	Nursing Home	903-223-6666	5415 Cowhorn Creek Rd, Texarkana, TX 75503	Bowie
Edgewood Manor Nursing and Rehab	Transportation Coordinator	Nursing Home	903-793-4645	4925 Elizabeth St, Texarkana, TX 75503	Bowie
Golden Villa	Transportation Coordinator	Nursing Home	903-796-0290	1104 South William St, Atlanta, TX 75551	Cass
Heritage House of Paris	Transportation Coordinator	Nursing Home	903-784-3100	150 47th St, Paris, TX 75462	Lamar
Heritage Park Village	Transportation Coordinator	Nursing Home	903-577-0759	1714 North Edwards Ave, Mt. Pleasant, TX 75455	Titus
Home Place	Transportation Coordinator	Nursing Home	903-739-9450	115 27th St, Paris, TX 75460	Lamar
Hopkins House	Transportation Coordinator	Nursing Home	903-439-1202	890 Camp St, Sulphur Springs, TX 75482	Hopkins

Organization	Job Title	Category	Business Phone	Address	County
Live Oak Assisted Living Center	Transportation Coordinator	Nursing Home	903-597-4140	115 Montgomery Rd, Lone Star, TX 75668	Morris
Magnolia Alzheimer's Assisted	Transportation Coordinator	Nursing Home	903-838-5001	4317 McKnight Rd, Texarkana, TX 75503	Bowie
Mt Pleasant Assisted Living	Transportation Coordinator	Nursing Home	903-572-8123	2009 N Edwards Ave, Mt. Pleasant, TX 75455	Titus
Oaks Assisted Living	Transportation Coordinator	Nursing Home	903-838-7319	4317 McKnight Rd, Texarkana, TX 75503	Bowie
Paris Oaks	Transportation Coordinator	Nursing Home	903-784-3243	2905 North Main St, Paris, TX 75460	Lamar
Pine Tree Ranch Assisted Living	Transportation Coordinator	Nursing Home	903-783-0652	2990 Pine Mill Rd, Paris, TX 75460	Lamar
Premier Home Care and Hospice	Transportation Coordinator	Nursing Home	903-737-9010	750 Clarksville St, Paris, TX 75460	Lamar
Reunion Plaza Senior Care & Rehabilitation	Transportation Coordinator	Nursing Home	903-280-7048	1401 Hampton Rd, Texarkana, TX 75503	Bowie
Rose Haven Retreat	Transportation Coordinator	Nursing Home	903-796-4127	200 Live Oak, Atlanta, TX 75551	Cass
Southern Wind Manor	Transportation Coordinator	Nursing Home	903-855-1555	618 Quitman St, Pittsburg, TX 75686	Camp

Organization	Job Title	Category	Business Phone	Address	County
Spring Lake Assisted Living	Transportation Coordinator	Nursing Home	903-785-1110	750 North Collegiate Dr, Paris, TX 75460	Lamar
Sterling House of Texarkana	Transportation Coordinator	Nursing Home	866-360-5383	4204 Moores Ln, Texarkana, TX 75503	Bowie
Sunny Acres of DeKalb	Transportation Coordinator	Nursing Home	903-667-5589	540 SE Front St, DeKalb, TX 75559	Bowie
Texarkana Nursing Center	Transportation Coordinator	Nursing Home	930-792-3812	4920 Elizabeth St, Texarkana, TX 75503	Bowie
Texas Enterprises	Transportation Coordinator	Nursing Home	903-897-9600	102 Floyd St, Naples, TX 75568	Titus
The Magnolia Assisted Living	Transportation Coordinator	Nursing Home	903-838-7319	4205 Richmond Meadows, Texarkana, TX 75503	Bowie
Therron Grainer Nursing & Rehab	Transportation Coordinator	Nursing Home	903-639-2561	215 FM161 S, Gughes Springs, TX 75656	Cass
Visiting Angels Living Assistance Services	Transportation Coordinator	Nursing Home	903-784-3902	1849 Lamar Ave, Paris, TX 75460	Lamar
Heritage Plaza Nursing Center	Transportation Coordinator	Personal	903-949-6379	600 W 52nd St, Texarkana, TX 75503	Bowie
Wesley House Assisted Living	Transportation Coordinator	Personal	903-439-0529	1044 Church St, Sulphur Springs, TX 75482	Hopkins

Organization	Job Title	Category	Business Phone	Address	County
Linden-Kildare Consolidated ISD	Superintendent	School	903-756-7071	205 Kildare Rd, Linden TX, 75563	Cass
Sulphur Springs Independent School District	Transportation Coordinator	School	903-885-2153	631 Connally St, Sulphur Springs, TX 75482	Hopkins
Saltillo Independent School District	Transportation Coordinator	School	903-537-2386	P. O. BOX 269, SALTILLO, TX 75478	Hopkins
Yantis Independent School District	Transportation Coordinator	School	903-383-2462	105 W. Oak, Yantis, TX 75497	Hopkins
Avery Independent School District	Transportation Coordinator	School	903-684-3460	150 San Antonio St, Avery, TX 75554	Red River
Cumby Independent School District	Transportation Coordinator	School	903-994-2260	303 Sayle St, Cumby, TX 75433	Hopkins
Chapel Hill Independent School District	Transportation Coordinator	School	903-572-8096	1069 County Rd 4660, Mount Pleasant, TX 75456	Titus
Chisum Independent School District	Transportation Coordinator	School	903-737-2830	3250 Church St, Paris, TX 75462	Delta

Organization	Job Title	Category	Business Phone	Address	County
Clarksville Independent School District	Transportation Coordinator	School	903-427-3891	1500 West Main St, Clarksville, TX 75426	Red River
Commerce Independent School District	Transportation Coordinator	School	903-8863755	3315 Washington St, Commerce, TX 75428	Delta
Avinger Independent School District	Transportation Coordinator	School	903-562-1355	245 Connor St, Avinger, TX 75630	Cass
Queen City Independent School District	Transportation Coordinator	School	903-796-8256	P O BOX 128, QUEEN CITY, TX 75572	Cass
McLeod Independent School District	Transportation Coordinator	School	903-796-7181	19395 Farm to Market Road 125, McLeod, TX 75565	Cass
Bloomburg Independent School District	Transportation Coordinator	School	903-728-5216	307 W. Cypress, Bloomburg, TX 75556	Cass
Pewitt Consolidated ISD	Transportation Coordinator	School	903-884-2136	PO BOX 1106, Omaha, TX 75571	Cass
Atlanta Independent School District	Transportation Coordinator	School	903-796-4194	106 West Main St, Atlanta, TX 75551	Cass

Organization	Job Title	Category	Business Phone	Address	County
Bowie County School Transportation	Transportation Coordinator	School	903-628-2071	1001 Boston Ave, New Boston, TX 75570	Bowie
Como-Pickton Consolidated ISD	Transportation Coordinator	School	903-488-3671	13017 TX Hwy 11 E, Como, TX 75431	Hopkins
Cooper Independent School District	Transportation Coordinator	School	903-395-2111	PO Box 478, Cooper, TX 75432	Delta
Daingerfield-Lone Star ISD	Transportation Coordinator	School	903-645-2239	200 Tiger Dr, Daingerfield, TX 75638	Morris
Detroit Independent School District	Transportation Coordinator	School	903-674-6131	110 E. Garner St, Detroit, TX 75436	Red River
Fannindel Independent School District	Transportation Coordinator	School	903-367-7251	601 W Main St, Ladonia, TX 75449	Lamar
Harts Bluff ISD	Transportation Coordinator	School	903-577-1146	3506 FM 1402, Mt. Pleasant, TX 75455	Titus
Honey Grove Independent School District	Transportation Coordinator	School	903-378-2264	1206 N. 17th St, Honey Grove, TX 75446	Lamar

Organization	Job Title	Category	Business Phone	Address	County
Hughes Springs Independent School District	Transportation Coordinator	School	903-639-3800	871 Taylor St, Hughes Springs, TX 75656TX	Cass
Hughes Springs Independent School District	Transportation Coordinator	School	903-639-3800	871 Taylor St, Hughes Springs, TX 75656	Morris
Miller Grove Independent School District	Transportation Coordinator	School	903-459-3288	7819 Farm Road 275, South Cumby, TX 75433	Hopkins
Mount Pleasant Independent School District	Transportation Coordinator	School	903-575-2000	2230 N Edwards Ave, Mount Pleasant, TX 75455	Titus
Mount Vernon Independent School District	Transportation Coordinator	School	903-537-2266	501 Texas Highway 37, Mount Vernon, TX 75457	Franklin
North Hopkins Independent School District	Transportation Coordinator	School	903-945-2194	1994 FM Road 71 West, Sulphur Springs, TX 75482	Hopkins
North Lamar Independent School District	Transportation Coordinator	School	903-737-2000	3201 Lewis Ln, Paris, TX 75460	Lamar

Organization	Job Title	Category	Business Phone	Address	County
Paris Independent School District	Transportation Coordinator	School	903-737-7473	1920 Clarksville St, Paris, TX 75460	Lamar
Prairieland Independent School District	Transportation Coordinator	School	903-652-6476	466 FM 196 South, Pattonville, TX 75468	Lamar
Rivercrest Independent School District	Transportation Coordinator	School	903-632-5204	4126 US-271, Bogata, TX 75417	Red River
Roxton Independent School District	Transportation Coordinator	School	903346-3213	303 Denton St, Roxton, TX 75477	Lamar
Sulphur Bluff ISD	Transportation Coordinator	School	903-945.2460	P.O. Box 30 Sulphur, Bluff, TX 75481	Hopkins
Winfield Independent School District	Transportation Coordinator	School	903-524-2221	113 School St, Winfield, TX 75493	Titus
Winnsboro Independent School District	Transportation Coordinator	School	903-342-3737	207 E. Pine St, Winnsboro, TX 75494	Hopkins
City Cab	Transportation Coordinator	Taxi	903-739-9999	50 Drive-In Ave, Paris, TX 75460	Lamar
CityTaxi Company	Transportation Coordinator	Taxi	903-794-8294	1401 Spruce St, Texarkana, TX 75501	Bowie

Organization	Job Title	Category	Business Phone	Address	County
Lone Star Cab Company	Transportation Coordinator	Taxi	903-784-5389	801 W Houston St, Paris, TX 75460	Lamar
Yellow Cab Co	Transportation Coordinator	Taxi	903-794-4141	1312 W 7th St, Texarkana, TX 75501	Bowie
Yellow Cab Co	Transportation Coordinator	Taxi	903-784-6666	Paris, TX 75460	Lamar